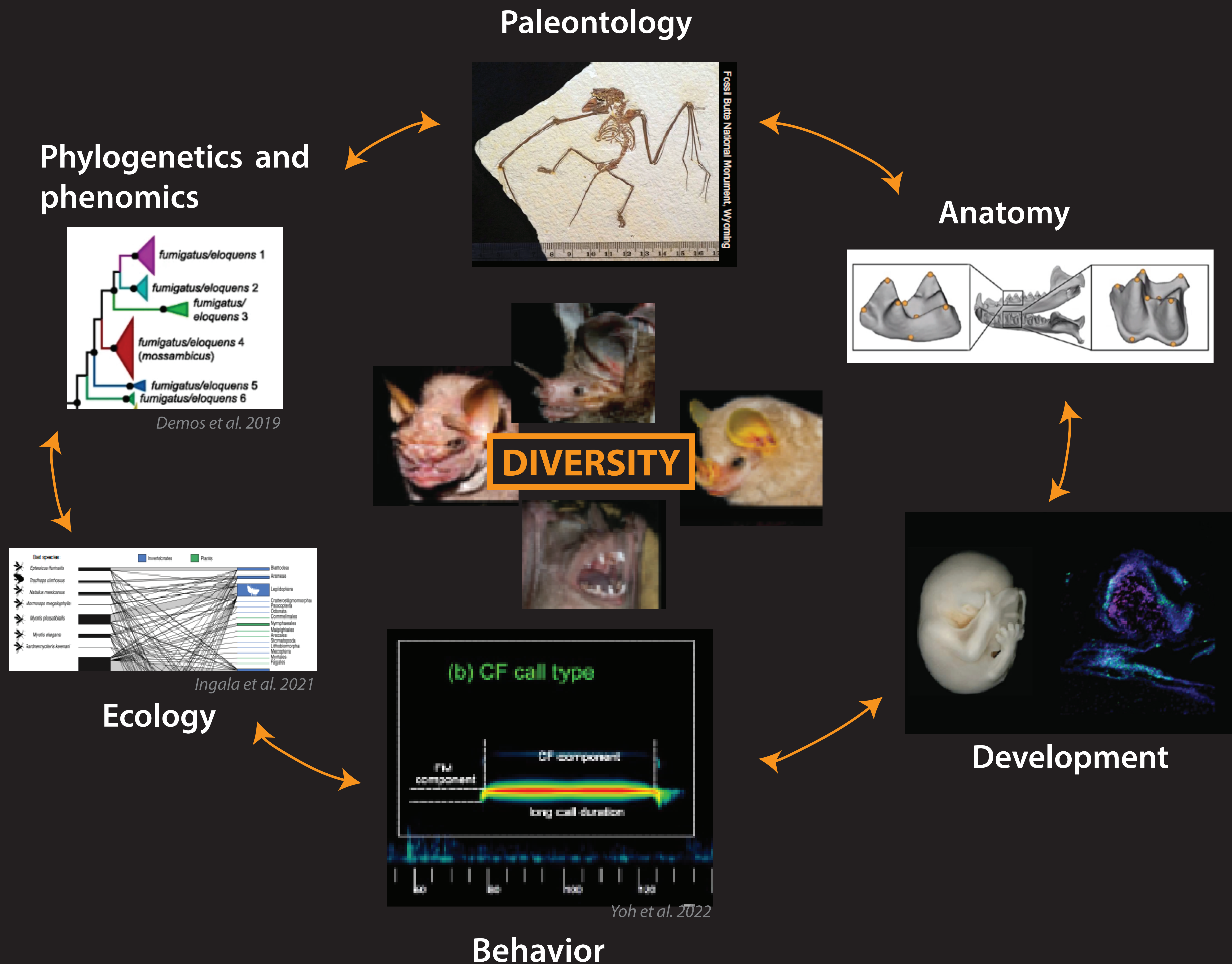


BAT PHENOMICS AND EVOLUTION NETWORK



BPEN is a new, informal international network of researchers who describe and document the phenotypes of bats (living and extinct) and seek to elucidate the developmental, functional, and evolutionary forces that have shaped their exceptional diversity.



COLLABORATIVE PROJECTS:

- Data and syntheses about phenotypic variation in bats
- Origins and evolution of bats, flight and echolocation
- Evolutionary developmental biology of bats
- Drivers and mechanisms of morphological innovation and diversification
- Responses of bat communities and lineages to past and current climate change
- New methods in phenomics and phylogenetics

GOALS

- grow the BPEN community phenotype data archives to include studies of phenotypes such as behavior and ecology as well as morphology
- enhance the BPEN membership scope to include researchers in underrepresented geographic regions, such as Africa and South East Asia.

WHERE? BPEN members are located across the globe – including in the US, Argentina, Australia, Belgium, Brazil, Canada, Colombia, Czech Republic, France, Germany, Mexico, Netherlands, Spain, and UK – and many also belong to other GBatNetworks.

CONTACT

Alexa Sadier - asadier@ucla.edu
 Sharlene Santana - ssantana@uw.edu

